

*Create your personal kitchen*

KITCHEN  
**INSPIRATION**

**keller**





# KELLER KITCHENS

---

Welcome to Keller, we are happy to help you find the kitchen that suits you perfectly! Curious how we do that? First of all, we are a Dutch brand, we have been making our kitchens in our own factory for more than 85 years. Through close contact with designers, trend watchers and our customers, we know exactly what a contemporary kitchen requires. We translate those requirements into beautiful kitchens!

### ***Choice of materials, style and price range***

Keller offers a wide range of models and colours, in various materials, so that there is a wide choice in price range. The extensive range, selected and designed with the latest trends in mind, offers an abundance of inspiration. Whether you are looking for a timeless design, a sleek modern look, a cool industrial design or a warm classic atmosphere, we have the perfect kitchen for you.

### ***Make a statement in environmental friendliness with us***

Be inspired by our kitchen designs that are not only surprising and innovative, but also make a statement in environmental friendliness. Our kitchens are produced carbon neutral (since 2017!) and our factory meets the highest sustainability standards. This way you buy a responsible product and together we ensure a bright future.

### ***Curious? See the materials in real life!***

Are you ready for the next step after reading this brochure. Then don't wait to make an appointment with a Keller kitchen specialist. Here, advisors with a passion for the profession will help you find the perfect kitchen that suits your lifestyle and taste.

*Find a dealer  
near you*

# CONTENTS

## WELCOME

In 4 steps to your personal kitchen	6
Keller kitchen specialists	8

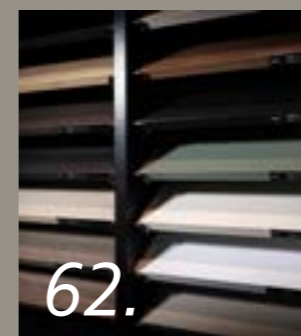
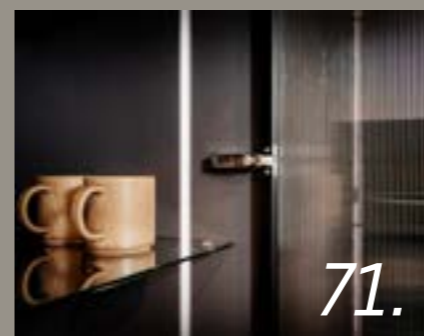
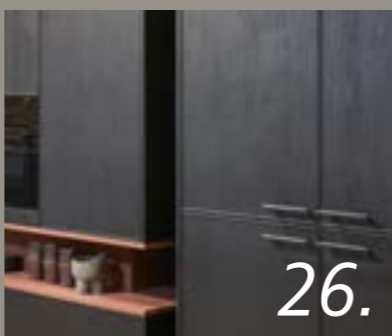
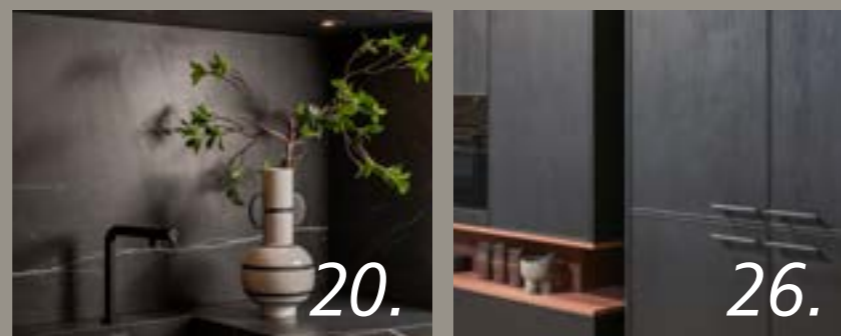
## KITCHEN INSPIRATION

### Interior style MODERN

Perfect Sense	12
Nautical Navy	14
City Chic	16
Black Marble	18
Pure Basic	20
	22

### Interior style CLASSIC

Majestic Mansion	24
Ocean Breeze	26
Marbling Moods	28
Tuscan Villa	30
Glam Chic	32
	34



## Interior style COUNTRY

Misty Grey	36
New Country	38
Cottage Life	40
Smokey Wood	42
Oak Aged	44
	46

## Interior style INDUSTRIAL

Urban Nude	48
Nature's Choice	50
Dark Rituals	52
Rock Solid	54
Black Metal	56
	58

## Utility/laundry room

	60
--	----

## WHAT MAKES US UNIQUE

Beautiful on the outside and inside	62
Choice in colour	68

## ABOUT US

Dutch design & craftsmanship	78
Sustainability is key	80
Production in our own factory	82
Our story	84



*Interior style  
Trends  
Personal touch  
Budget*

# YOUR PERSONAL KITCHEN

Our mix of colours, materials and styles makes it possible to create a kitchen that fits your taste, interior style and the latest trends seamlessly. And of course budget also plays an important role. This mix is different for everyone. That is what we mean by creating a personal kitchen.

The kitchen layouts that you find in this brochure serve as inspiration and can be adapted in terms of layout, model, colour, handle /handleless and many other options.

Your Keller dealer will be happy to make a design that suits your home and budget.





*Advisors with a*

# **PASSION FOR KITCHENS**

Because we think it's important that you can discuss your personal wishes with an expert, we only sell our kitchens through a selected network of kitchen specialists. This is where expert people personally guide you from the design to the moment you start using your new kitchen. Together with you they create your personal kitchen.

*Find a dealer near you*

# WHAT DRIVES US EVERY DAY

*is the passion for design & sustainability*

“

*Making beautiful kitchens accessible  
is what we stand for every day.  
We feel personally involved.  
That is our drive.*

”





## *Interior style* **MODERN**

The modern interior style incorporates sleek, timeless design palettes. In addition to clean lines or a graphic interplay of lines, we are also seeing more and more round shapes these days. The interior is often minimalistic with lots of natural light.

This style has various movements, such as Scandinavian, Italian, and of course, Dutch design. In today's modern interior, we recognise the influence of Cubism, with clean lines and geometric surfaces.

The (kitchen) furniture here is sleek, with a clear function. In the modern interior, there is room for innovation, modern art and high-quality materials such as marble, aluminium, chrome, glass and smooth leather.

The basic colours are neutral and sober (think black or white) and are sometimes combined with wood. Strongly coloured accessories and/or walls and striking works of art can also be used. In the Scandinavian movement, (cool) pastel shades are featured.



# PERFECT SENSE

*This design is a bold combination of black and white, surrounded by Japandi style materials that give a beautiful and warm touch to the kitchen. Executed in a mix of black and white fronts in Fenix®.*



**Trends** Smart materials, Japandi, ultra matte  
**Model** Sense  
**Kleur** Fenix® black and Fenix® white

#### **Eye-catchers**

- ✓ Tall doors from one panel
- ✓ Composite top with special edge finish
- ✓ Handle trim lighting



#### **Why not try this?**

Choose ultra-matte melamine instead of Fenix® and a laminate top for a more cost-effective option. The kitchen can also be combined with a Fenix® worktop for a beautiful tone-on-tone design.





#### Why not try this?

For an even more luxurious version, choose a lacquered front instead of melamine. By choosing a laminate top instead of composite, the price tag becomes a bit more friendly.



**Trends** Veneer in relief structure, smoked glass, wine cabinet

**Model** Bolton & Ribbonwood

**Kleur** Navy blue & warm walnut

#### Eye-catchers

- ✓ Wine cabinet with tall door in smoked glass
- ✓ Beautiful interplay of lines in the island
- ✓ Melamine fronts in chic navy blue

# NAUTICAL NAVY

*Discover the Nautical Navy! The combination of navy blue and walnut veneer in relief structure create an elegant modern style with a classic allure.*

*The colour combination provides a nautical touch.*





# CITY CHIC

A beautiful combination of warm oak, cool marble and trendy matt black. The marble-look worktop covers the sides of the kitchen island for a luxurious look..



**Trends** Marble, matt finish, extra high base units

**Model** Elba

**Colour** Warm oak

**Eye-catchers**

- ✓ Large, open cabinet in the colour ultra matt carbon
- ✓ Handle trims, water tap and sink in black
- ✓ Kitchen island and breakfast bar in marble-look



**Why not try this?**

Although there's hardly any difference from the real thing, we used a front in faux wood. For a more luxurious version choose veneer. The stone worktop in marble-look is also available in laminate. It's no less beautiful, but it is less expensive.





#### Why not try this?

Choosing an ultra matt melamine finish is friendlier for your wallet while maintaining the unique appearance.

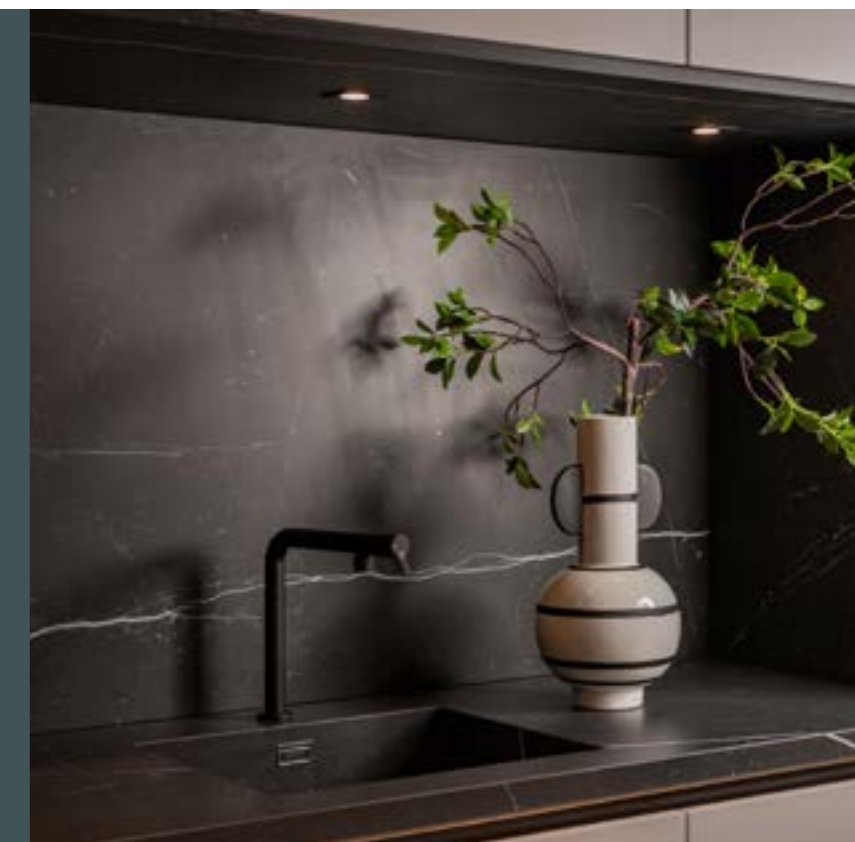
# BLACK MARBLE

*Timeless yet trendy. The fronts in matt white (matt lacquer in the colour snow) form a clever contrast with the top and the recess in black marble ceramic. The extra high, handleless base units with a low plinth create a sleek design..*

**Trends** Marble, matt finish, extra high base units  
**Model** Evia  
**Colour** Snow

#### Eye-catchers

- ✓ Recess in black marble
- ✓ Buffet with LED spots under the floating cabinets
- ✓ Extra high base units and tall doors from one panel







# PURE BASIC

*This kitchen combines fresh white with natural wood. Basic, yet very beautiful. The design creates a calm atmosphere and makes a room look bigger than it actually is.*



*Modern, minimalistic & Scandinavian.*

**Trends** Scandi-style, natural materials, wood  
**Model** Elba  
**Colour** Ice

#### **Eye-catchers**

- ✓ Scandinavian design in white
- ✓ Handle trims in stainless steel
- ✓ Natural wood for a warm touch

#### **Why not try this?**

You can save money by having the worktop made in laminate. The handle trims in this kitchen can also be made in white or another NCS colour.





*Interior style*  
**CLASSIC**

The classic living style is majestic and elegant with rich materials and deep colour palettes. It is characterised by its symmetrical lines, ornaments and elements such as columns, panelling, chandeliers, fireplaces and bookcases. The interior evokes a feeling of luxury and wealth.

Within this style we see different movements such as the boutique hotel style or influences from the early 20th century such as art deco. More and more modern-classic interiors in which classical elements are applied in a modern way today.

The furniture is spacious and comfortable, with materials such as luxurious leathers, dark wood and black lacquer playing a leading role. Accessories such as old tableware, heirlooms and special art objects emphasise the classic style. Dark tones predominate, commonly used materials are shiny fabrics, velvet, brass and copper. Old (glazed) tiles and herringbone parquet are also typical classic elements that are totally on trend again.



# MAJESTIC MANSION

*This modern-classic kitchen recalls the style of the Dutch masters, with the play of dark & light and the floral pattern in the wallpaper. The warm, dark veneer, narrow frames and the glass doors in smoked glass create a 'majestic' atmosphere.*



**Trends** Front with narrow frame, pecan brown  
**Model** Lexington & Elba  
**Colour** Matt black oak stain & pecan brown

#### **Eye-catchers**

- ✓ Recessed units in pecan brown
- ✓ Tall glass doors in smoked glass with bars
- ✓ Narrow frame front in matt black oak stain



#### **Why not try this?**

You can also opt for a flush front without frame. A wood-look melamine finish reduces the price tag. The glass-fronted units are available in dark or light smoked glass, and the doors can be made without bars.





# OCEAN BREEZE

*Sink into the atmosphere of Ocean Breeze, a fusion of classic and modern design.*



*The contrast between deep black oak and ocean lacquer, and the fabulous ceramic worktop creates an impressive impact.*

**Trends** Led lighting, controlled using an app  
**Model** Crystal & Bronx  
**Colour** Ocean silk gloss lacquer & deep black oak

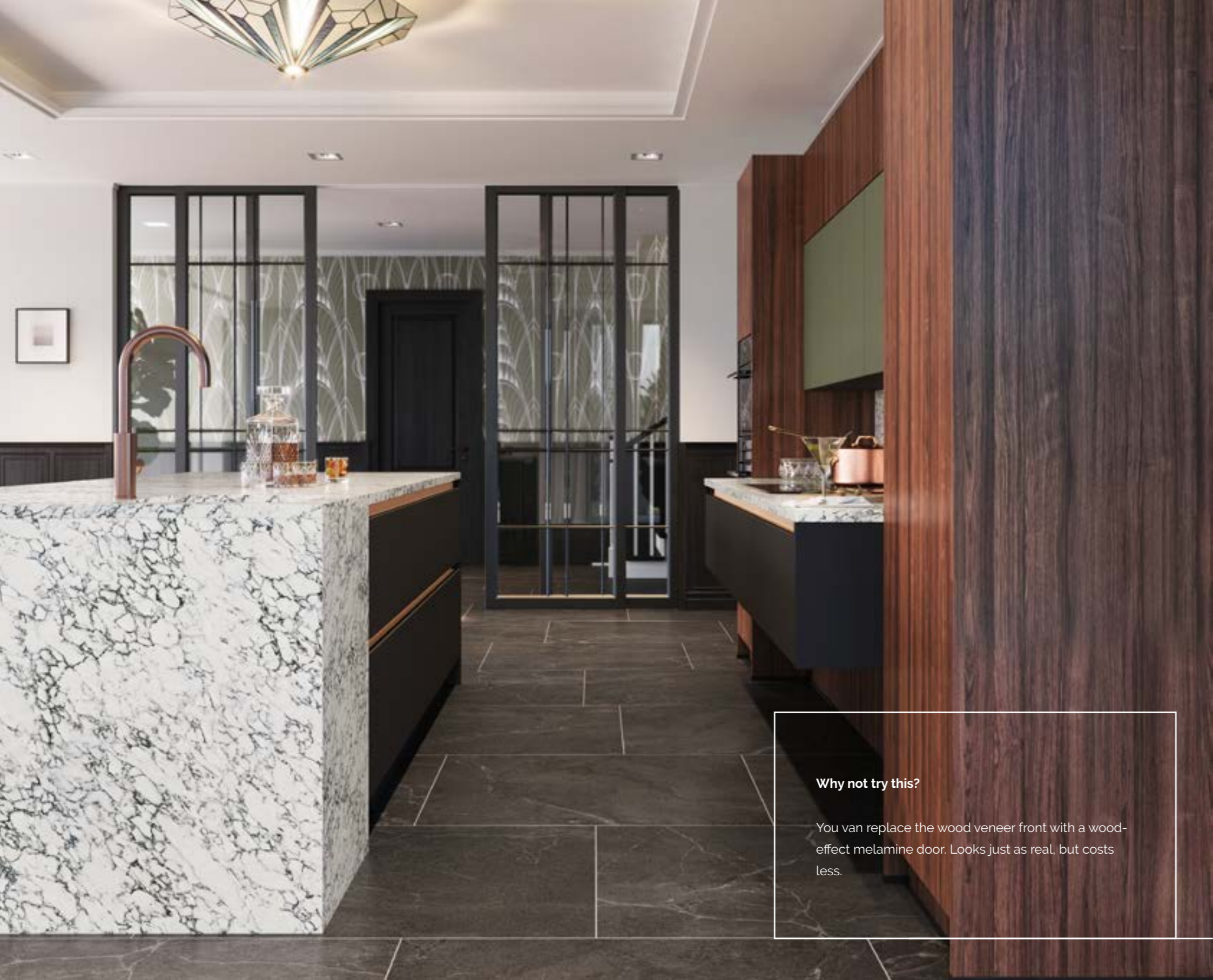
#### **Eye-catchers**

- ✓ Ceramic recess with LED spotlights
- ✓ Continuous handle trims to the sides
- ✓ Glass units in dark smoked glass

#### **Why not try this?**

You can make savings by opting for melamine instead of lacquer, and a laminate worktop.





**Why not try this?**

You can replace the wood veneer front with a wood-effect melamine door. Looks just as real, but costs less.

# MARBLING MOODS

*The materials in this modern-classic kitchen are reminiscent of styles from the last century. The combination of chic walnut, green fronts in silk gloss lacquer and red copper accents give the kitchen a 'classy' retro touch.*

**Trends**

Suspended cabinets, walnut

**Model**

Watford, Evia and Crystal

**Colour**

Bronze walnut, ultra matt anthracite & silk gloss lacquer in olive green

**Eye-catchers**

- ✓ Suspended cabinets
- ✓ Worktop and sink in composite marble look with green veins
- ✓ Inside in colour 'graphite'





# TUSCAN VILLA

Step inside this Mediterranean-style kitchen, where the charm of southern living meets the rustic beauty of warm bronze and wood tones.



**Trends** Greige shades  
**Model** Elba & Bronx  
**Colour** Sesame & cognac oak

**Eye-catchers**

- ✓ Tall midway units with appliances
- ✓ Table integrated into island
- ✓ Matt wood-effect



**Why not try this?**

For a more luxurious version, you can choose veneer or solid wood, combined with fronts in a lacquered colour.





#### Why not try this?

Replace the wooden fronts and worktop with melamine and laminate and you get a different price tag.



**Trends** Boutique hotel style, smoked glass, dark wood  
**Model** Nijenborgh  
**Colour** Brown oak stain

#### Eye-catchers

- ✓ Glass units with smoked glass and LED lighting
- ✓ Veneered doors in brown oak stain
- ✓ Metallic handle trims in gun metal

# GLAM CHIC

*Enter the world of Glam Chic. Experience the style of a luxury hotel with classical elements incorporated in a modern way. Details like the glass units with smoked glass and LED lighting, the royal cooking island and the recess in composite make for a rich appearance.*





*Interior Style*  
**COUNTRY**

A country style interior breathes the atmosphere of the outdoors and incorporates many natural materials and botanicals. Inspired by charming holiday homes and cottages, the country style offers warmth, tranquility and cosiness.

The country style interior is becoming more modern, but will always have weathered objects with a soul and characteristic details. Furniture is robust, with (coarse) woods and materials like old beams and stone or wooden floors are popular.

It's characterised by the use of natural materials such as wood, stone, linen, wool and rattan. Naturally, we see natural and weathered colours while accessories such as cushions and plaids give the room a warm feel.







**Why not try this?**

Prefer a real wood front, lacquered or stained?  
No problem, but that does cost a bit more.



**Trends** Scandinavian design

**Model** Cascada

**Colour** Mist

**Eye-catchers**

- ✓ In-frame kitchen design
- ✓ Greige accent panels in the open unit
- ✓ White sink, extractor and tap

# MISTY GREY

*The minimalist beauty of Scandinavian design. For this rustic design, we have outlined the shaker doors with panels, creating the 'in frame' design. A smart, modern take on the rustic kitchen.*





# NEW COUNTRY

*New Country exudes rural charm. With natural textures, fresh sage green and inviting wood touches that create a sense of calm and comfort.*



**Trends** Green kitchen, natural materials  
**Model** Bredevoort & Ribbonwood  
**Colour** Sage green structured lacquer & pure oak

**Eye-catchers**

- ✓ Wood relief in pure oak for a modern touch
- ✓ 'Old-time' unit with cooler and freezer
- ✓ Many special touches in the island unit



**Why not try this:**

Choose a wood-effect melamine front and/or a melamine frame and laminate top for a budget-friendly option.





**Why not try this?**

Instead of the solid wood front, choose a wood look front in melamine. Same look, different price tag. Prefer a different accent front? Choose one of the other striking decors from our TREND collection.



**Trends** Natural materials, webbing, built-in cabinets

**Model** Maine & Bronx

**Colour** Dark grey oak & linen

- Eye-catchers**
- ✓ Trendy linen-look drawer fronts in island
  - ✓ Inside in colour 'mist'
  - ✓ Robust veneer with knots and fissures, making each front unique

# COTTAGE LIFE

*Natural materials are trending. This is reflected in the linen-look fronts of the kitchen island and in the styling. The worktop and back wall are made of composite.*





# SMOKEY WOOD

The rough veneer with smoked oak stain gives this kitchen a rustic yet luxurious appearance. The handle trims in gun metal give it a modern finishing touch! The matching buffet really completes this spacious country kitchen.



**Trends** Coarse wood, rustic materials, smoked wood  
**Model** Maine  
**Colour** Smoked oak stain

**Eye-catchers**

- ✓ Extra coarse robust veneer with knots and fissures
- ✓ Custom-made buffet
- ✓ Worktop in natural stone chiselled edge



## Why not try this?

Finishing the veneered fronts in matt lacquer would make the kitchen even more exclusive. Choosing a synthetic worktop will compensate the price increase.





# OAK AGED

Natural materials like wood and stone are the main elements of this kitchen.  
The storage jars on the wall shelf give a typical rustic look.



*Natural materials like wood and stone provide the basis for this kitchen.*

**Trends** Natural wood, dark accents and accessories  
**Model** Loevestein  
**Colour** Grey oak stain

#### **Eye-catchers**

- ✓ Solid oak kitchen with shaker model
- ✓ Open cabinet on worktop
- ✓ Chimney in wood veneer with integrated extractor

#### **Why not try this?**

Choosing a melamine front will make the kitchen more affordable without compromising on the main style. Would you rather have composite or natural stone worktop? No problem, although it is a little bit more expensive.



*Interior Style*

# INDUSTRIAL

The industrial style of living is reminiscent of old (factory) buildings or lofts. Construction details such as steel beams, concrete or brick are characteristic details in these types of design schemes. Robust and aged materials give this interior a sturdy touch.

Furniture is made of coarse woods and leathers, combined with greyish fabrics that provide a little softness. Accessories are often vintage objects - think of large industrial or factory lamps. The floors are often plain and subtle.

In contemporary homes, an industrial atmosphere can be created by floors and walls in a concrete look or photo wallpaper of concrete or brick.

The industrial colour palette is sober. White, black and all shades of grey in between. As an accent, a primary colour such as yellow or red is often added.







#### Why try not this?

Would you prefer a dark solid colour? Take a look at our range of melamine fronts, with warm and cool shades of brown and grey. Replacing the cassette handle with a sturdy handle gives another look.



**Trends** Nude shades and matt wood-effect

**Model** Elba & Bronx

**Colour** Sea salt & coffee oak

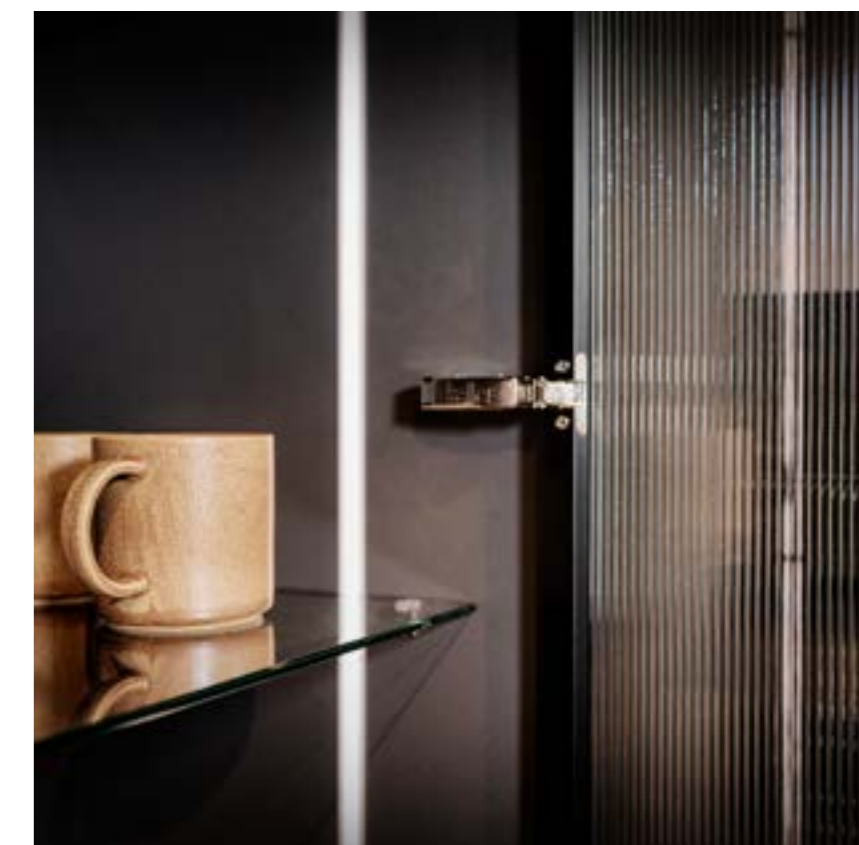
#### Eye-catchers

- ✓ Tall glass doors in fluted glass with led strip lighting
- ✓ Matt wood-effect in coffee oak colour
- ✓ Wine cabinet in composite rear wall

# URBAN NUDE

*Nude shades can also be used to create an industrial look. For Urban Nude, we chose Sea salt, a shade from our on-trend greige palette.*

*The combination with robust composite and fluted glass units give the kitchen a tough and stylish look.*





# NATURE'S CHOICE

An elegant industrial kitchen showcasing a range of natural features. The striking lines of the wood decor is combined with the cactus colour and vibrant green ceramic.



**Trends** Elegant industrial, green kitchens

**Model** Bolton & Bronx

**Colour** Cactus & okapi

**Eye-catchers**

- ✓ Glass shelves combined with lighting behind the casing panels
- ✓ Attractive interplay of lines in island unit
- ✓ Tip-On unit at front of the island



**Why not try this?**

This kitchen is built in melamine. Would you like a more luxurious version? Then opt for lacquered or stained veneers, and a lacquered front for the solid colour. At Keller you can choose from 2050 NCS lacquer colours. Ask your dealer for advice.



# DARK RITUALS

This loft-style kitchen is a real eye-catcher with the high bookcase placed over the island. The worktop covers part of the side of the island. The trendy accent fronts in Stainless Steel and the smart cubes in black complete the sturdy look!



**Trends** Weathered materials, black, metal, stone  
**Model** Nijenborgh & Bolton  
**Colour** Matt black oak stain & stainless steel

#### Eye-catchers

- ✓ Island with high bookcase and hood-in-hob
- ✓ Back wall with composite tiles and smart cubes
- ✓ Trendy accent front in stainless steel



#### Why not try this?

Don't have room for a large island? Choose a corner design or smaller island. We also have beautiful trend decors in concrete or stone look for an industrial style.





# ROCK SOLID

Stone and steel form the basis of this hyper-industrial kitchen. The island is completely wrapped in ceramic. The graphite structured lacquered fronts and extractor in metal frame complete the picture.



*Stone and steel form the basis of this kitchen.*

**Trends** Open frames, metal, stone  
**Model** Crystal  
**Colour** Structured lacquer graphite

**Eye-catchers**

- ✓ Sturdy recessed handles in base units
- ✓ Invisible induction hob
- ✓ Island completely wrapped in ceramic

**Why not try this?**

Is structured lacquer not matt enough? All colours in the MASTER collection can also be supplied in matt lacquer.



# BLACK METAL

It's the latest kitchen trend: an industrial look, dark colours, cool metal and stone. The grey floor and raw concrete-look wall form the perfect basis.



**Trends** Raw materials, black, metal, stone

**Model** Bolton

**Colour** Metal blacks

**Eye-catchers**

- ✓ Sink and water tap in Gun Metal
- ✓ Welded smartcubes
- ✓ Fronts in realistic metal-look



**Why not try this?**

The welded open frames are also available in a sleeker, black steel version. For a different sturdy look, choose fronts in stainless steel or concrete.





# LUXURIOUS UTILITY ROOM

*Keller's range of units can also be used to fit out a utility, storage or laundry room. The base unit for washing machines and dryers has a metal supporting structure for the safe installation of appliances. The extra deep tall unit has a suspension system with hooks for the storage of a vacuum cleaner and various cleaning materials.*

#### **TÜV GS QUALITY LABEL**

Our range of utility room furnishings is tested for stability, sustainability and mechanical safety by the renowned German test and certification centre TÜV Rheinland..

**Model** Bolton

**Colour** Sage green



# BEAUTIFUL INSIDE & OUT

*Our extensive range can meet virtually all our customers' personal requirements. With us, a 'bespoke kitchen' also means 'within budget'. We achieve this by offering alternative materials. You can choose from more expensive and more budget-friendly materials without compromising the look. A comforting thought if you're trying to strike a balance between beauty and price.*

*Visit one of our Keller dealers to see and feel the range of options.*

“

*Choose from more expensive or more budget-friendly materials without compromising the look.*

”





## HANDLELESS; HORIZONTALLY & VERTICALLY

When it comes to appearance, the devil is in the details. That's why Keller's handleless kitchens are handleless in every way.

Not only horizontally, but also vertically. This way, the minimalistic effect you're aiming for is in no way compromised. The result is sleek, pure and completely contemporary..

## SLEEK DESIGN AND EXTRA CAPACITY

One of the latest kitchen trends is a low plinth for a beautiful, sleek design. Our XXL-cabinet allows you to apply a lower plinth without changing the working height. How does it work?

Keller kitchens are produced according to the Grid 130 dimensions, whereby the horizontal dimensions are made up of multiples of 130 mm. The new XXL-cabinet is half a grid size higher than the regular programme:  $780 \text{ mm} + 65 \text{ mm} = 845 \text{ mm}$ . With a plinth height of 70 mm, the working height remains the same.

Additional advantage: it also provides more storage space and an optimised working height!





## (PAN) DRAWERS

Keller kitchens are equipped as standard with the Antaro drawer system which features soft-close technology. The drawers are supplied with a non-slip mat and glass sideboxes. The colour of the drawers matches the carcass inside; light grey for carcass inside in white or mist and anthracite for carcass inside in graphite.

Want even more luxury and design? Then the Merivo drawer system is an option. This drawer box is distinguished by its improved running properties and stability. The design is also unique. The full metal sides give your cabinet interior an even more modern, sleek design. Beautiful dividers and lighting add the finishing touch..



## MODULAR CUTLERY ORGANISERS

With the new series of modular drawer organisers, cutlery drawers from 30 to 120 cm can always be fitted out completely.

This makes for neat, tidy drawers where the liner is no longer visible. You can order them individually or as a set, in the colours natural oak and black ash.



## HINGES

Keller kitchens are equipped with top quality hinges with integrated soft-close technology for silent and smooth closing operation.

Keller glass cabinets with black aluminium-framed fronts are now fitted with black hinge and hinge support to match the frames.



## HANDLES

Will you choose handleless, handle trims or a handle? Or perhaps a combination!

These are the things that give your kitchen design a truly personal touch.

We have a very extensive collection of handles, with plenty of for every taste and interior style.

*Take a look at our handle collection*





# CHOICES IN COLOUR

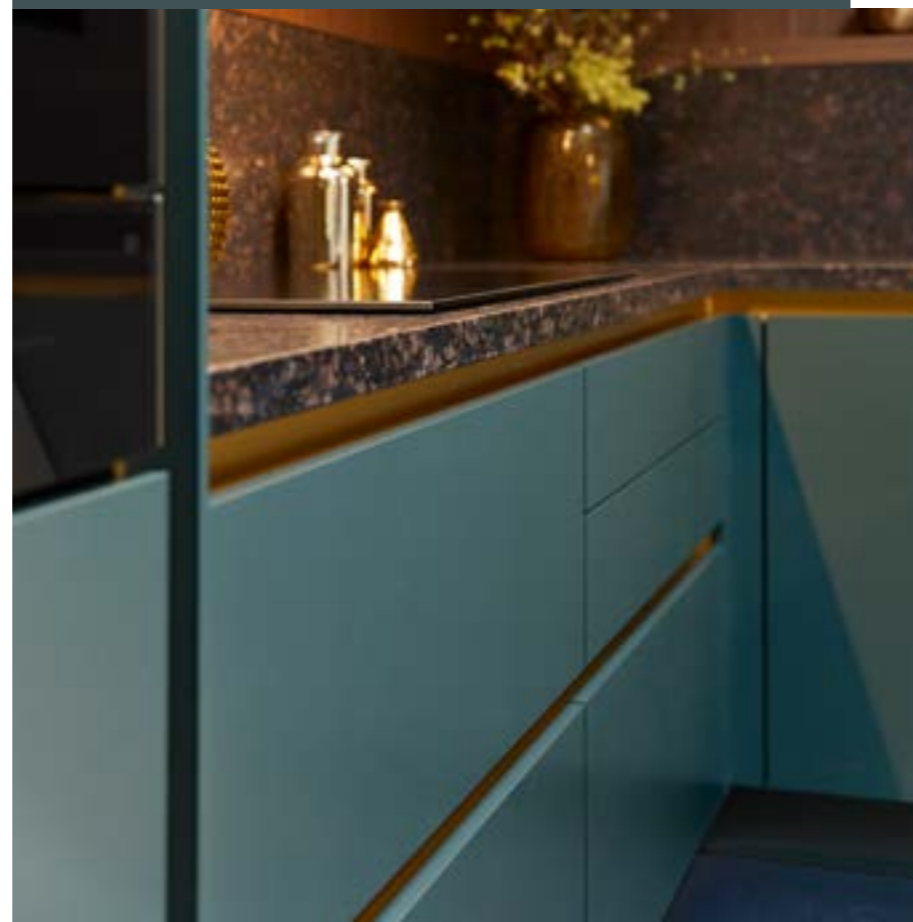
The choice of colours in your interior and kitchen is also very personal. We offer a wide range of colours and decors in our range of fronts. Whether you like neutral or bold, trendy or timeless, natural or primary colours, everything is possible.

A kitchen in two or even three front colours? So-called two-tone or three-tone kitchens are all the rage right now. Choose two (or three) beautiful matching or contrasting fronts. Or apply a subtle accent with an accent front. The sky's the limit.

Colour choice does not stop at the fronts and visible sides of the units. You can choose from three colours for the interior, and we also have a choice of handle trims in no fewer than 2050 lacquer colours and five metallic finishes.

## HANDLE TRIMS IN COLOUR

To make the handleless kitchen truly personal, handle trims are available in 2050 colours in silk gloss lacquer and our five metallic lacquer shades: gold, copper, bronze, titanium and gun metal.



## 2.050 NCS LACQUER COLOURS

All the Keller models that can be lacquered are available in no fewer than 2050 different NCS lacquer colours. You can have your entire kitchen, or just a detail, finished in one of these colours. The 2050 NCS colours are available in structured and silk gloss\*. We work exclusively with water-based lacquer, so there are no harmful solvent emissions.

\* All colours in the MASTER collection can also be supplied in matt and gloss lacquer.



## INSIDE CARCASS IN COLOUR

In addition to white, you can have the insides of the carcass finished in the colours mist and graphite.

To ensure a perfect colour match, drawers, pan drawers and unit interiors can be finished in Light grey or Anthracite and shelves and cover caps are finished in the chosen colour.

## INTERIOR IN COLOUR

The cabinet interior fittings such as swing out shelves, apothecary cabinets and drawers will also be matched to the colour of the inside of the carcass and finished in light grey or anthracite. This will turn your kitchen furniture into real design furniture.





## UNIT INTERIORS

To organise your units, Keller also offers you a choice of many beautiful interiors. So our range also enables you to fully customise the interior. Opt for the storage system that best meets your needs. Examples include:

- ✓ Storage units with a range of options for shelves, pan drawers and drawers
- ✓ Corner base units with 1/2 and 3/4 swing-out shelves
- ✓ Le Mans pivoting swing-out shelves
- ✓ Drawer and pan drawer organisers
- ✓ Waste systems



## GLASS UNITS

Our range of glass doors can really give kitchen designs that extra something and take them to the next level. You can choose between glass doors with and without divided panes, with the option of strip lighting in the side wall. Units are available in a range of heights, from a worktop dresser to a tall unit.

### *Fluted glass*

Fluted glass - also known as ribbed glass - brings texture into a living space. The glass is clear but not transparent, because of the texture used. It features flowing vertical lines that create a beautiful lighting effect when combined with LED strip lighting inside the units. Fluted glass is only available in doors without bars.

### *Smoked glass*

Smoked glass is available in light and dark versions. The glass has a bronze-coloured glow. Smoked glass is available in doors with and without divided panes (the glazed surface is divided into areas with bars in between).

### *Lighting for glass units*

LED strip lighting in your glass units shows off your glassware, crockery or other items even better. Adjustable lighting lets you control the brightness and warmth of the light. Subtle or striking, the choice is yours

## WASTE SYSTEMS

Separating waste becomes easy with our waste systems. We offer solutions for a built-in waste bin and/or extensive systems for separating waste. You choose what suits you. Ask your Keller kitchen specialist about the possibilities





## SUSTAINABLE LIGHTING

It is impossible to imagine a household without LED lighting these days. We can safely say that it has become the new environmentally friendly standard. That's why we have chosen an intelligent platform for LED lighting that combines sustainability, design and ease of use.

### Sustainable:

- 24V instead of the traditional 12V
- 13% more light
- 40% energy savings compared with traditional LED lighting

### Beautiful:

- design solutions for every corner of the kitchen
- infinitely adjustable from warm white to cold white
- infinitely adjustable brightness

### Easy:

- all lighting types on the same platform
- operated by remote control or switch
- can be connected to various home automation platforms
- plug & play



### Pick the option(s) that appeal to you:

- ✓ Built-on and integrated spotlights
- ✓ Strip lighting
- ✓ Spotlights for glass shelves
- ✓ Side strip lighting for glass units
- ✓ Handle trim lighting
- ✓ Drawer and pan drawer lighting

### Connecting to your favourite home automation platform

The module can be connected to various home automation systems to control lighting, sound and automation. This includes familiar platforms such as Apple HomeKit, Amazon Alexa, Google Home and Philips Hue.







## EXTRA **WIDE** UNIT FOR COMBINED FRIDGE-FREEZER

The new type of MaxiSpace fridge offers 45% more capacity than a standard fridge-freezer. This model is accordingly both taller and wider than usual models. For the built-in model, we have developed a 75 cm wide housing unit. The unit has an extra sturdy construction and an extra hinge at the top.



## WOOD

Wood is beautiful, warm and versatile and is widely used in today's kitchen and home trends. Keller offers a wide range of woods and wood veneers. In sleek and frame models, and a rough or smooth wood texture. For finishes, you can choose from 9 stain colours and no fewer than 2050 lacquer colours, both structured and silk gloss.



## AFFORDABLE CUSTOMISATION

Our vast range of sizes, materials, colours and finishes ensures that we can offer a tailor-made kitchen in any price range.

Our range of units can also be used to create beautiful, matching dressers and open shelves.

Many of our units, including drawer and pan drawer units, can be adjusted in height, width and depth to create a variety of beautiful bespoke designs.

*Take a look at our models and finishes*

## QUALITY & GUARANTEE

At Keller, beauty and quality go hand in hand. A long lifespan and carefree use of your kitchen are standard in each Keller kitchen. We give you a five-year unconditional factory warranty on all kitchen furniture.

That means that if the quality or finish doesn't live up to our standard, or a part doesn't function as it should, we'll repair or replace it free of charge.



# ABOUT US

*We are motivated because we know why we do what we do, and who we do it with. And we do it together. We inspire our customers, and they inspire us in turn.*

“

*Kitchens from our own Dutch factory for more than 85 years, with CO<sub>2</sub> neutral production since 2017.*

”



# DUTCH CRAFTSMANSHIP

---

*Keller has been making kitchens in its own factory for more than 85 years. By choosing a Keller kitchen you're opting for Dutch quality and craftsmanship. You are guaranteed a product manufactured locally, with care and consideration for people and the environment.*





*CO<sub>2</sub>-neutral production  
Sustainability as a strategic priority  
Level 5 on the CO<sub>2</sub> performance scale  
Developing a fully circular kitchen*

# TOGETHER TOWARDS A BRIGHT FUTURE

*In recent decades, we have developed an ambitious and successful sustainability strategy. Our kitchens are manufactured in a CO<sub>2</sub> neutral way and we are working towards a fully circular kitchen.*

*In 2023, we also became the first Dutch kitchen manufacturer to achieve level 5 - the highest level - on the CO<sub>2</sub> performance scale. This puts us at the forefront of sustainability initiatives in the kitchen industry and means you can be sure of a responsible purchase!*

*Elba, our most popular kitchen model, carries the Dutch environmental quality label Milieukeur, certifying that these kitchens are free of toxic materials and that all components meet modern environmental and quality standards.*



*Read more about our CSR policy*





# THE FACTORY

“ *The latest manufacturing techniques and machinery, and more than 300 experienced and motivated employees.* ”

*Our factory in Bergen op Zoom is one of the largest in Europe, covering 56,000 m<sup>2</sup>. But that's not all. To deliver a genuine quality product to our customers, we use only the latest technologies and first-class materials. After all, a beautiful kitchen should last for years.*

*Our kitchens are manufactured in a CO<sub>2</sub> neutral way. Our fully automatic paint spraying installation applies the 2.050 different NCS lacquer colours to perfection. We work exclusively with water-based lacquer, so there are no harmful solvent emissions. This results in healthier working conditions and is better for the environment.*



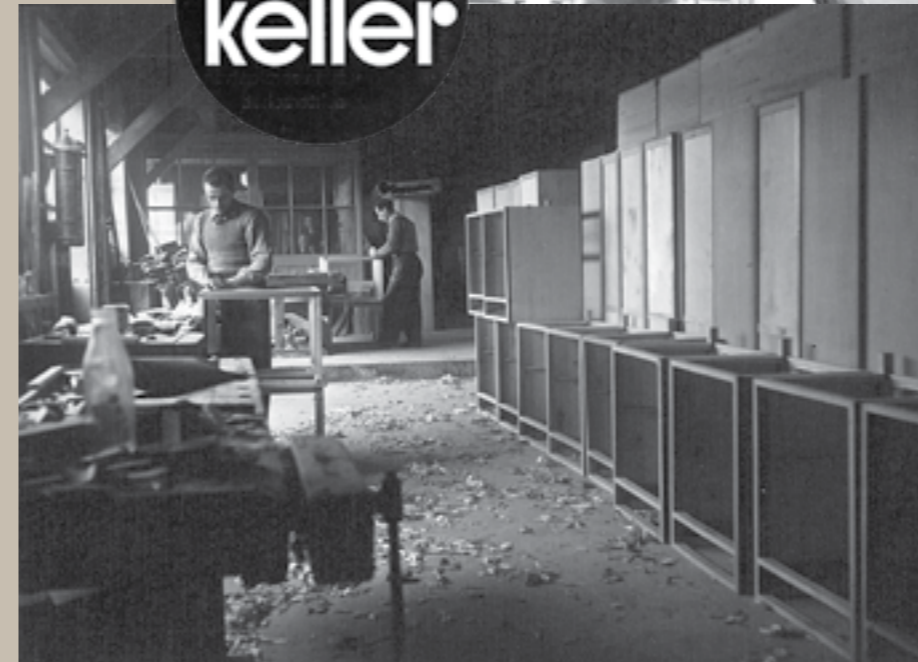
85 years of Dutch craftsmanship

# HISTORY

*In 1935, Gerard and Henk Keller, sons of a Rotterdam furniture maker, started a parquet flooring business. Forced by scarcity, they began making kitchens during the war. They managed to secure an order of 1000 kitchens for the construction company Bredero's in 1946.*

*They did so on the basis of craftsmanship, design, keen pricing and their personal way of doing business. This laid the foundations for our current way of operating and our standing at the top of the Dutch kitchen market.*

*Read more about  
our history*







This inspiration brochure is produced on paper that meets all the environmental requirements for printing.

**Keller Keukens**  
Drebbelstraat 35  
4622 RC Bergen op Zoom (NL)

[www.kellerkitchens.com](http://www.kellerkitchens.com)



**keller**

[www.kellerkitchens.com](http://www.kellerkitchens.com)